

# **Hand Pump on Platform w Cistern**

## **Installation Instructions**



NOTES: Please check for any damage caused by the shipping company and take appropriate steps to file a claim, if needed.

\*Please call **Digsafe** and check for any underground utilities before digging anywhere.

### **Materials needed**

Level, shovel, screw gun, and bags of premixed concrete if you wish to permanently affix the cistern enclosure. Concrete amount required may vary depending on how deep you can get the holes. Concrete amounts can be easily calculated at <http://www.quikrete.com/Calculator/Main.asp>.

Keep in mind that, depending on the use and location, you may need access to the cistern so you can repair or replace it, so the whole thing should not be buried in concrete. If you wish to bury the legs in concrete, you may want to install leg extensions that allow you to do that.

### **Instructions**

1. When you receive this shipment, make sure to check it over before accepting it from the driver. If you see obvious damage, take a picture and refuse the shipment. If you already accepted the shipment, and you start unpacking and see damage, take as many pictures as possible to show the extent of the damage, and then send them to us so we can file a claim.
2. Move all parts to desired installation area. Some customers bury this entire cistern and platform so it's 6 inches above the sand or the earth. Some people install it on top of the ground, but once you decide, mark the size of the hole needed, and dig it.
3. The PVC pipe with the brass fitting on top fits into the bottom of the pump. If you purchased a stump to go under the pump, now is the time to install the stump on the platform. Carefully line up the hole in the stump with the hole in the platform, then screw the two together. It may be just as easy to unscrew and remove the boards on top of the platform, and then temporarily stick the pipe down through to make sure the holes stay aligned as you screw the pump and platform together.
4. Make sure the PVC pipe runs through the platform hole, or through the stump hole as well as the platform hole, and fasten the bottom of the pipe into the bulkhead at the bottom of the tank.
5. Tip the platform back upright, and screw the pump into the brass fitting, and fasten the pump to the platform or stump with the four stainless steel screws.
6. Drop the entire unit into the prepared hole, and backfill to just below the water inlet.
7. Install the water line, and fasten it to the float valve attached to the cistern in the location provided. You may need to get an adapter fitting depending on how you are feeding water into this cistern. The float valve has been pre-adjusted to stop filling the tank at a predetermined level.
8. Turn on water to insure that the float valve is working properly (it should allow the water to fill the cistern and stop it before it reaches the top).
9. Test pump to insure it is working properly.
10. This is a self-priming pump, so it may take a few strokes to get the water to rise and come out of the spout. If for some reason this is not happening, it could be that the gasket inside is a little dry and leaky, so you should pull the handle all the way up so the piston is as far down in the pipe as possible, then unbolt the top of the pump and pour water into the piston pipe. Let it sit. If the gasket leaks at all, the water level will slowly go down, so just put more water in it. Time will allow the gasket to swell slightly, which is what you want. Rebolt, and try again.
11. Back fill support frame and cistern.
12. If applicable, replant grass surrounding deck area.

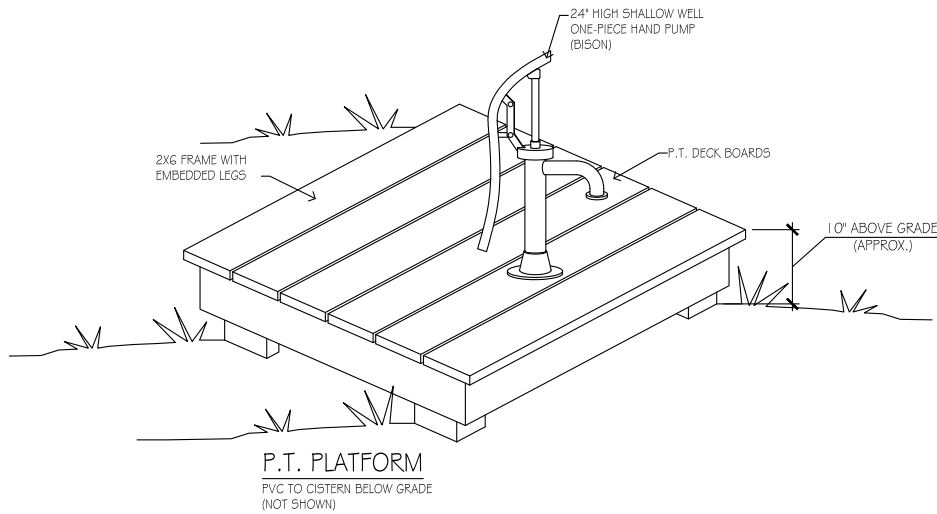
# **Hand Pump on Platform w Cistern**

## **Installation Instructions**

13. It is recommended that you winterize your pump by using the pump to remove all the water in the cistern, and then removing the pump until spring.
14. To remove pump simply remove the 4 SS lag bolts and turn pump to unscrew from PVC fitting and install the provided 1-1/4" PVC cap over the pipe to prevent debris from entering the cistern.
15. In freezing weather the plunger and the internal check valve may freeze to the pump body. If the pump is used it may tear the seals on these components. If you suspect that your pump is frozen remove it from the deck and bring inside to thaw.
16. All wood is treated with kid-friendly preservative, but as is the case with all wood facing the elements, it needs to be cared for, so check it periodically for rough spots, splinters, etc, and sand them out, and treat it with kid-friendly wood preservative (we have it available if you can't find it) once or twice a year to keep the wood from deteriorating.
17. Enjoy your Hand Pump!!

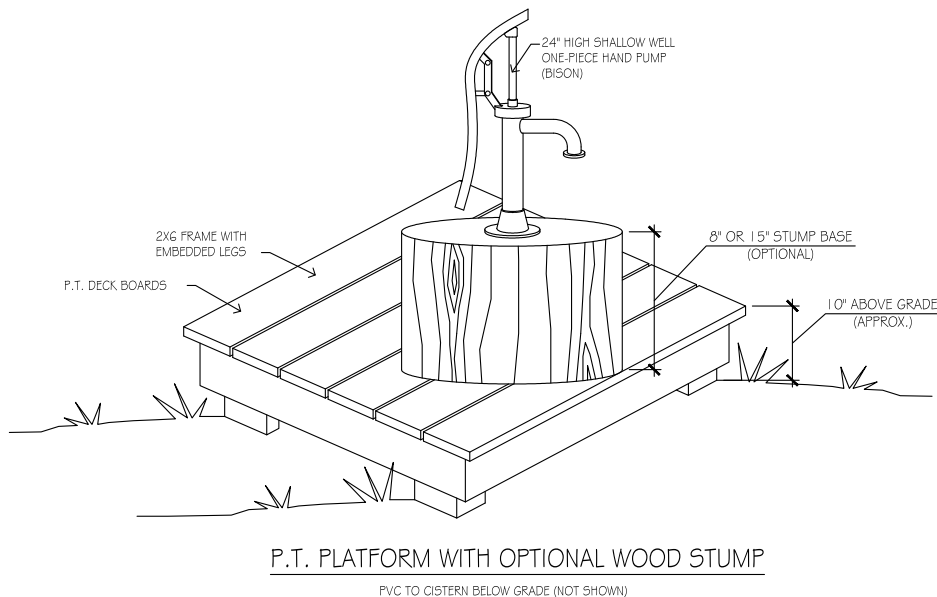
# Hand Pump on Platform w Cistern

## Installation Instructions



### HAND PUMP WITH CISTERN

OPTIONAL PLATFORMS SHOWN



NATURAL PLAYGROUNDS CO.  
85 WARREN ST.  
CONCORD, NH 03301  
(888)-290-8405  
www.naturalplaygrounds.com

PROJECT: HAND PUMP WITH PLATFORM

DRAWN BY:MK

DATE: 8/8/16

SCALE: 1"=1'-0"

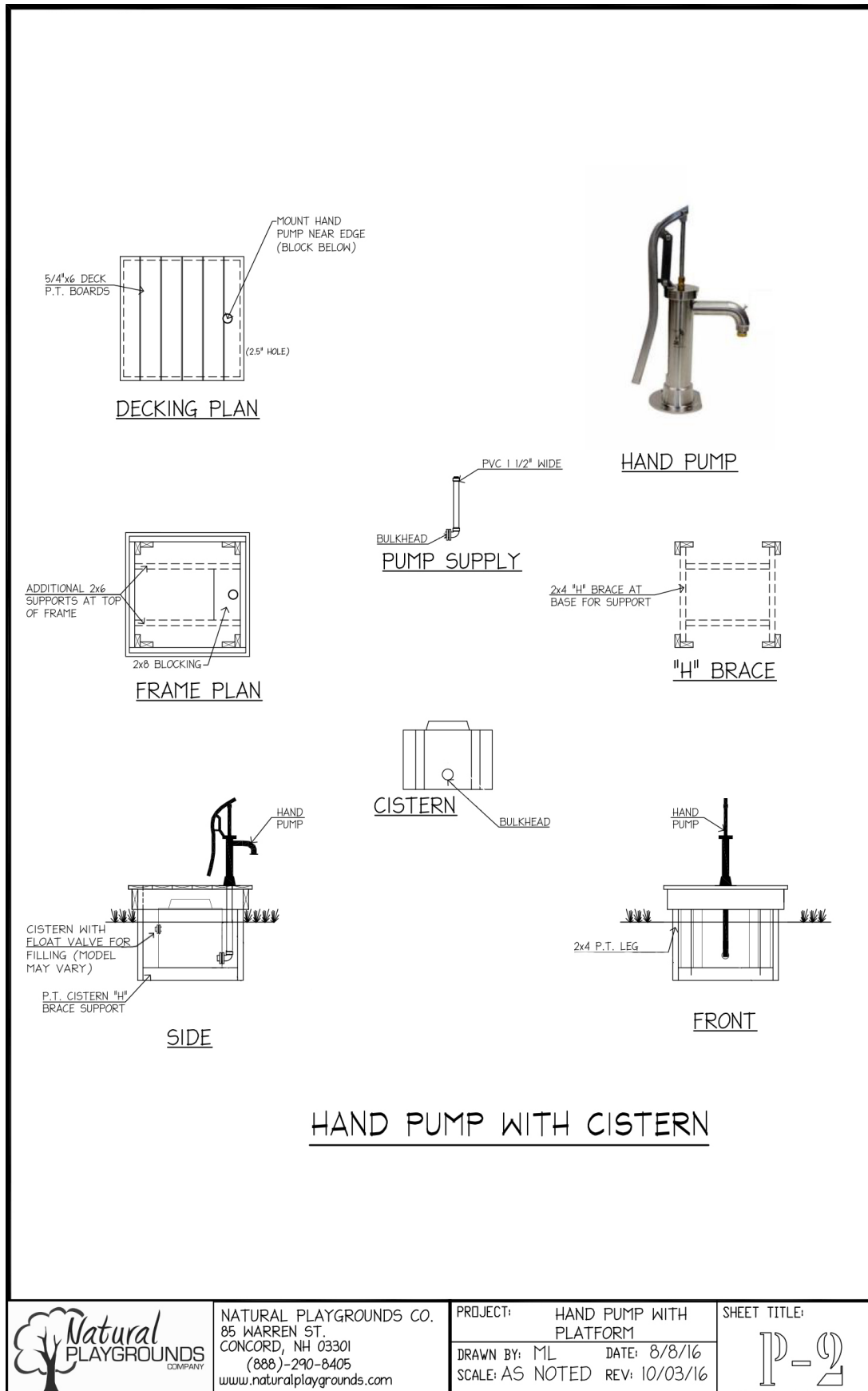
REV: 6/17/18

SHEET TITLE

P-1

# Hand Pump on Platform w Cistern

## Installation Instructions



NATURAL PLAYGROUNDS CO.  
85 WARREN ST.  
CONCORD, NH 03301  
(888)-290-8405  
www.naturalplaygrounds.com

PROJECT: HAND PUMP WITH PLATFORM  
DRAWN BY: ML DATE: 8/8/16  
SCALE: AS NOTED REV: 10/03/16

SHEET TITLE:

P-2

# Hand Pump on Platform w Cistern

## Installation Instructions

We had a customer call saying that the pump wasn't working the way it should. Water was pouring out of the pump without anyone pumping the handle up and down!

After several lengthy, trouble-shooting phone calls, we finally had him take a picture of the float valve inside the tank, and here's what we saw (see left photo)!!!

He had somehow turned the float valve clockwise a quarter turn, so the water outflow (the threaded section of the brass valve facing toward the left) was NOT FACING DOWN. That meant that when water started filling the tank, the float ball at the end of the brass rod (you can barely see the ball in the bottom left of the right photo) didn't ride on top of the water and turn the valve off, so water continued filling the tank all the way to the top, and then forced it cup into the pump!!

So, a quarter turn counter-clockwise so the outflow faced down, and the ball and rod started doing what they were supposed to do: rise up with the level of water until the pressure forced that little brass piston at the end of the float valve (facing you) was pushed in and shut off the water!

So — if you are having issues, this would certainly be something to look at to make sure everything is hooked up right!



# Hand Pump on Platform w Cistern

## Installation Instructions

